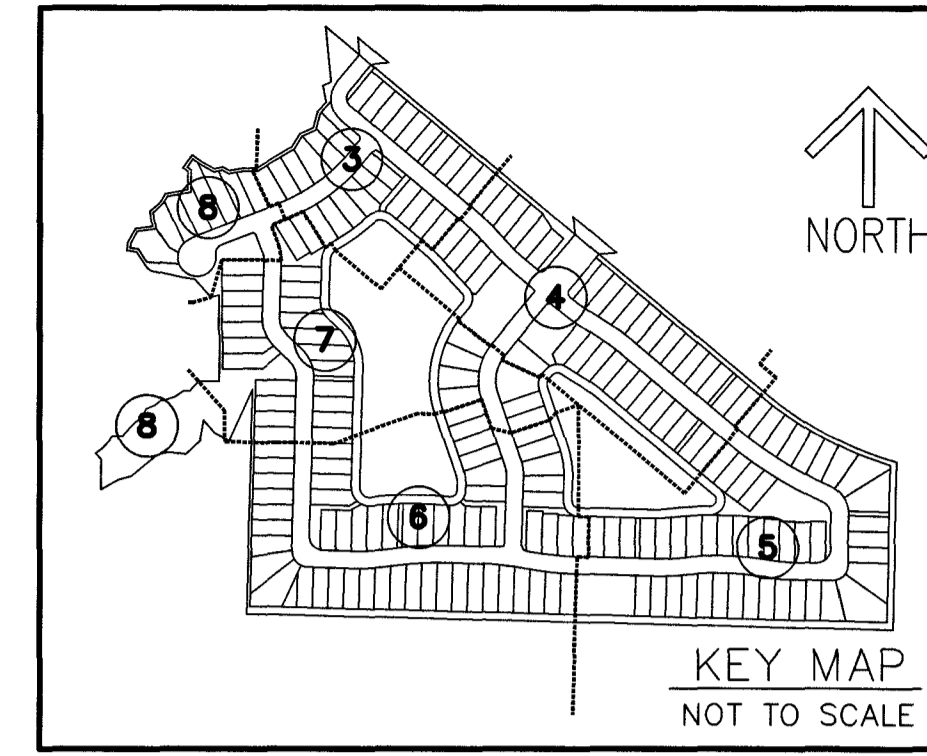


# AVENIR - POD 21

BEING A REPLAT OF A PORTION OF PARCEL A-1, AVENIR, AS RECORDED IN PLAT BOOK 127 PAGE 85, TOGETHER WITH A PORTION OF TRACT RBE8, AVENIR - POD 15, AS RECORDED IN PLAT BOOK 134 PAGE 179, OF THE PUBLIC RECORDS OF PALM BEACH COUNTY, FLORIDA LYING IN SECTION 16, TOWNSHIP 42 SOUTH, RANGE 41 EAST, CITY OF PALM BEACH GARDENS, PALM BEACH COUNTY, FLORIDA.

THIS INSTRUMENT PREPARED BY  
RONNIE L. FURNISS  
OF  
**CAULFIELD and WHEELER, INC.**  
SURVEYORS - ENGINEERS - PLANNERS  
7900 GLADES ROAD, SUITE 100  
BOCA RATON, FLORIDA 33434 - (561)392-1991  
CERTIFICATE OF AUTHORIZATION NO. LB3591  
AUGUST 2024



# 74

SHEET 7 OF 8

- LEGEND/ABBREVIATIONS**
- CL - CENTERLINE
  - Δ - DELTA (CENTRAL ANGLE)
  - AC - ACRES
  - CB - CHORD BEARING
  - CD - CHORD DISTANCE
  - DE - DRAINAGE EASEMENT
  - FSE - FIRE SAFETY ACCESS EASEMENT
  - L - ARC LENGTH
  - LAE - LIMITED ACCESS EASEMENT
  - LB - LICENSED BUSINESS
  - LBE - LANDSCAPE BUFFER EASEMENT
  - LSE - LIFT STATION EASEMENT
  - O.R.B. - OFFICIAL RECORD BOOK
  - PB - PLAT BOOK
  - PG - PAGE
  - P.P.A.E. - PERPETUAL PUBLIC ACCESS EASEMENT
  - R - RADIUS
  - (R) - INDICATES RADIAL LINE
  - RB - INDICATES RADIAL BEARING
  - RBE - ROADWAY BUFFER EASEMENT
  - RWAE/DE - RETAINING WALL ACCESS AND DRAINAGE EASEMENT
  - SF - SQUARE FEET
  - SUAE - SEACOAST UTILITY AUTHORITY EASEMENT
  - UE - UTILITY EASEMENT
  - PRM - DENOTES PERMANENT REFERENCE MONUMENT
  - 5/8" IRON ROD WITH CAP STAMPED "C&W PERM LB 3591"
  - - DENOTES PERMANENT CONTROL POINT
  - - 1/4 SECTION CORNER
  - ✕ - SECTION CORNER

## MATCH LINE SHEET 8

